



# DATA SHEET FOR FLP SWITCH SOCKET WITH TERMINATION CHAMBER

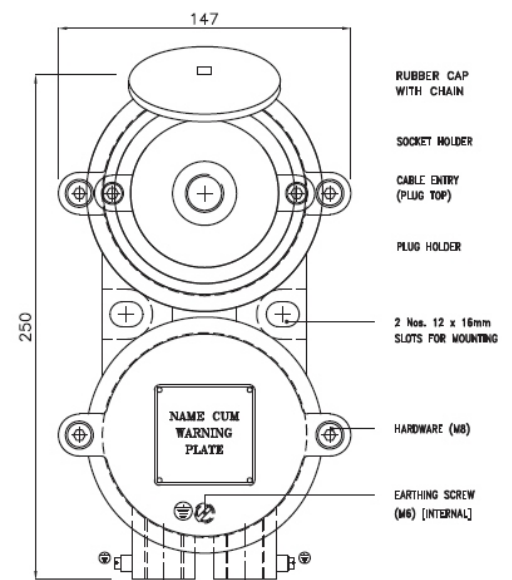
## TECHNICAL DATA:

PRODUCT	: CAT.NO.- SS/2C/2021
ENCLOSURE	: FLAME PROOF (Ex -d ), Gas Group IIA ,IIB, IIC As per IS/IEC 60079-1 : 2014
PROTECTION	: WEATHER PROOF IP – 66 AS PER IS/IEC 60529:2001 (Reaffirmed 2014)
AREA & TEMP. CLASS	: Ex db IIC T6 Gb ( EX tb / tc IIIC T85 C Db/Dc (ZONE 1 & 2 & Zone 21 & 22 )
CERTIFICATION	: CIMFR, BIS, PESO
TEMP CLASS	: T6
MATERIAL	: DIE CAST ALUMINIUM ALLOY
FINISH	: EPOXY POWDER COATED SHADE AS PER IS : 5
EARTHING	: 1 No INTERNAL & 2 No's EXTERNAL
HARDWARE	: STAINLESS STEEL
GASKET	: 'O' RING ENDLESS GASKET NEOPRENE / SILICON
NAME PLATE	: SS NAME PLATE CUM WARNING PLATE
ENTRIES	: 2 NOS AT BOTTOM AND 1 NO AT PLUG TOP OF M20/ ½” NPT / EQUIVALENT / UP TO M25
FLAP	: RUBBER FLAP WILL BE PROVIDED FOR SOCKET
TERMINALS	: 4 NOS OF 2.5 SQ.MM CLIP ON TYPE TERMINAL / UPTO 6 SQ. MM.
INTERLOCK	: INTERLOCKING ARRANGEMENT SUCH AS THE PLUG CAN NOT BE REMOVED WHEN THE SWITCH IS IN “ON” POSITION AND CAN BE WITHDRAW ONLY WHEN THE SWITCH IS IN “OFF” POSITION.



## OPTIONS

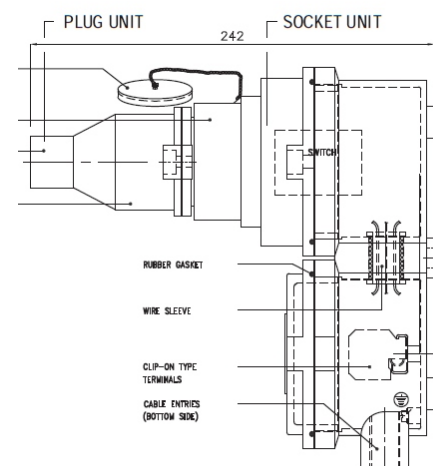
SR.NO	PARTICULAR	OPTIONS
1.	MATERIAL OF CONSTRUCTION	STAINLESS STEEL
2.	GLAND & PLUG	BRASS / SS / ALUMINIUM
3.	COLOUR SHADE	631, 632, 355, 7031, 7032 etc.
4.	CANOPY	M.S POWDER COATED / FRP / GI



FRONT VIEW

## SELECTION CHART

SR.NO	SWITCH RATING	POLE	VOLTAGE	PIN
1.	16 AMP	DP	240 V AC	2P + E
2.	16 AMP	TP	415 V AC	3P + E
3.	16 AMP	TPN	415 V AC	4P + E
4.	20 AMP	DP	240 V AC	2P + E
5.	20 AMP	TP	415 V AC	3P + E
6.	20 AMP	TPN	415 V AC	4P + E
7.	25 AMP	DP	240 V AC	2P + E
8.	25 AMP	TP	415 V AC	3P + E
9.	25 AMP	TPN	415 V AC	4P + E
10.	32 AMP	DP	240 V AC	2P + E
11.	32 AMP	TP	415 V AC	3P + E
12.	32 AMP	TPN	415 V AC	4P + E



SIDE VIEW